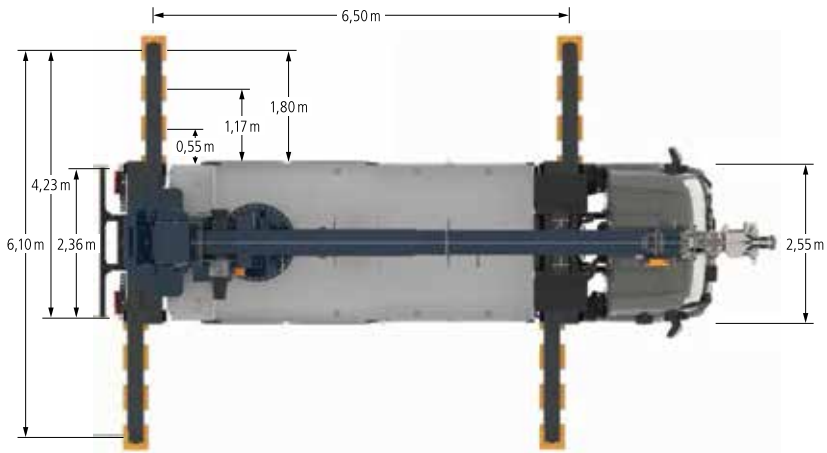
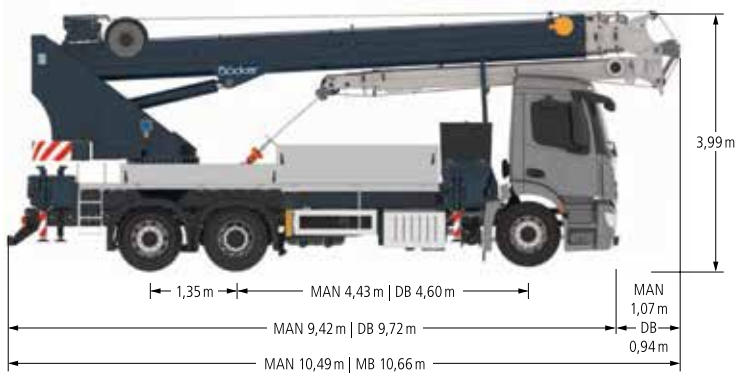


Bocker AK 46/6000

Truck crane

Dimensions

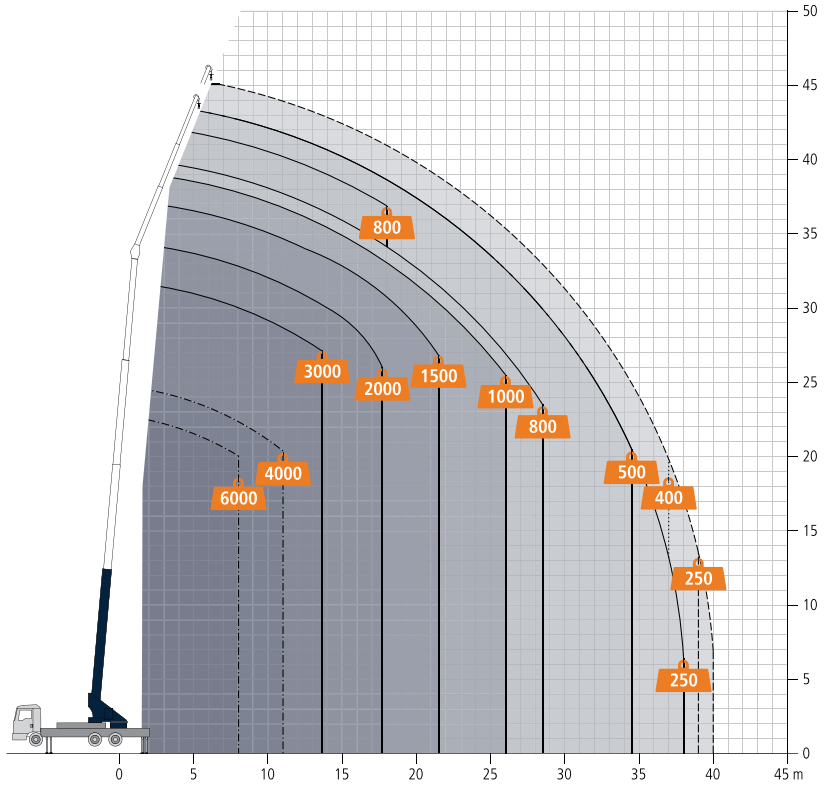


Bocker AK 46/6000

Bocker AK 46/6000

Lifting heights

Working range crane operation



Load in kg

Single-fall operation

Two-fall operation

With jib-extension (2 m)

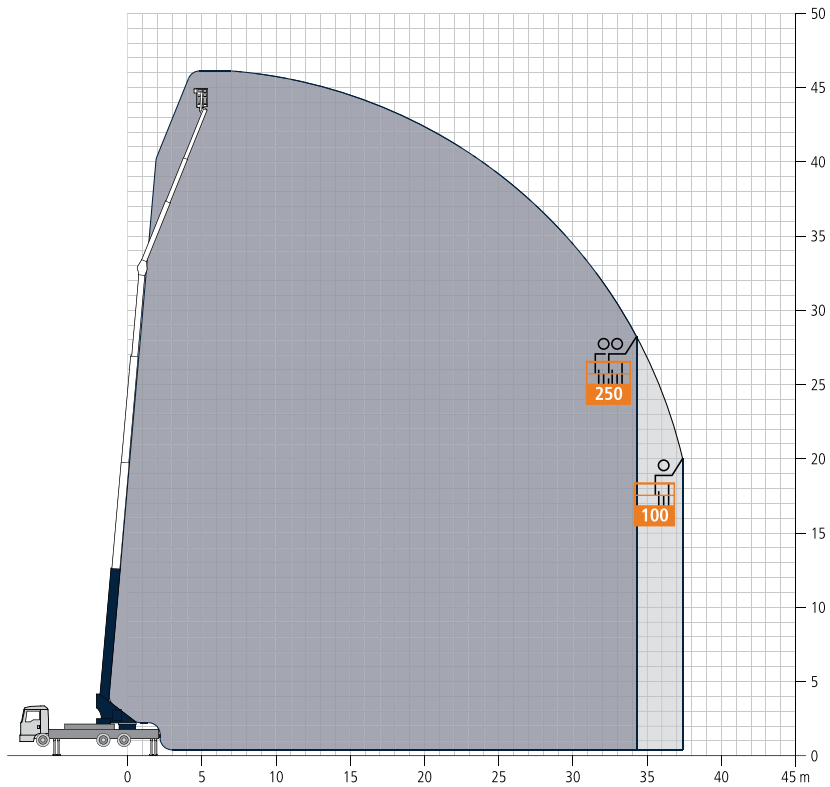
Increased jib load with

Bocker AK 46/6000

Bocker AK 46/6000

Lifting heights

Working range platform operation



Bocker AK 46/6000

Bocker AK 46/6000

Technical data

Permissible gross vehicle weight (t)	18 / 26
Maximum payload (kg)	3,000 (optional 6,000)
Maximum extension length (m)	44.0 (optional 46.0)
Working height up to boom (m)	33.8
Boom extendable (m)	5.3 / 8.1 / 11.0
Boom payload (kg)	3,000 / 1,500 / 800 / (400)
Main mast angle (degrees)	85
Boom angle (degrees)	162
Pivoting range (degrees)	+/- 310
Hook speed (m/min)	45
Range for crane operation at 250 kg (m)	38.0 (39.0)
Range for crane operation at 500 kg (m)	34.5
Range for crane operation at 1 tonne (m)	26.0
Range for crane operation at 2 tonne (m)	17.7
Range for crane operation at 4 tonne (m)	11.0
Range for crane operation at 6 tonne (m)	8.0
Range for crane operation at 12 tonne (m)	-
Range for platform operation with rotatable basket (m)	33.1 at 250 kg 35.3 at 100 kg
Range for platform operation with hooped basket (m)	34.3 at 250 kg 37.4 at 100 kg
Working height with rotatable basket maximum (m)	43.3
Working height with hooped basket maximum (m)	46.0

Bocker AK 46/6000