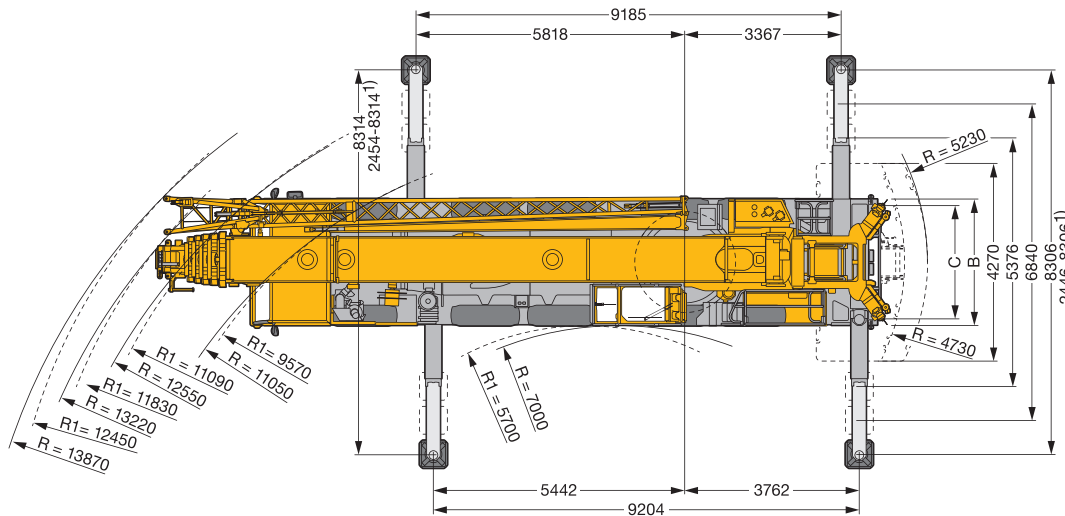
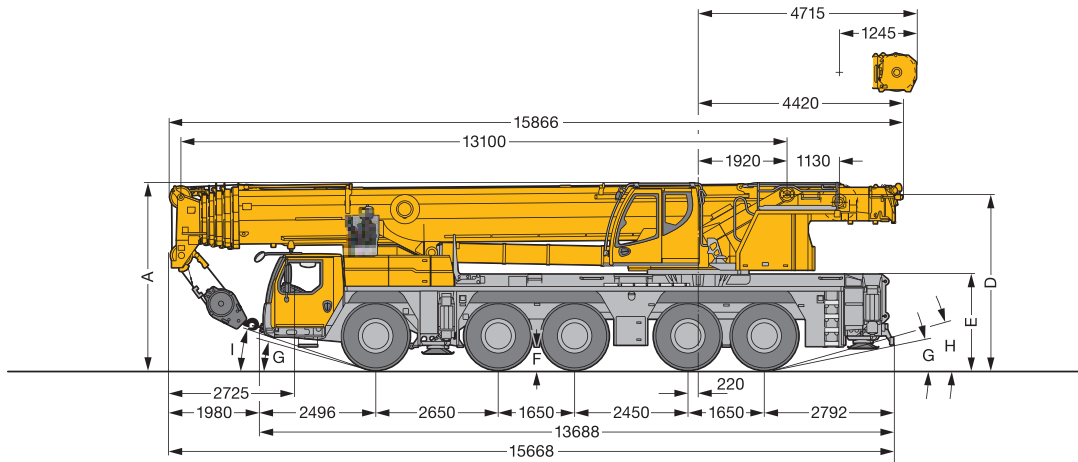



Liebherr LTM 1160-5.2

All terrain crane

Dimensions



	A	A 100mm*	B	C	D	E	I	H	F	G
385/95 R 25 (14.00 R 25)	3950	3850	2750	2360	3708	1996	17°	9°	358	13°
445/95 R 25 (16.00 R 25)	4000	3900	2750	2300	3758	2046	18°	10°	408	15°
525/80 R 25 (20.50 R 25)	4000	3900	2850	2320	3758	2046	18°	10°	408	15°


* Lowered

Liebherr LTM 1160-5.2


Liebherr LTM 1160-5.2

Weights/Working speeds

Weights







	Axle	1	2	3	4	5	Total weight t
	(t)	12	12	12	12	12	60*

* with double swing away jib, 3-sheave hook block, 1000 kg lifting tackle.




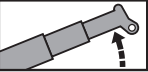
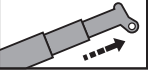
	Load t	Number of sheaves	Number of lines	Weight
	146	9	18	1320 kg
	86	5	10	900 kg
	61.6	3	7	700 kg
	27.2	1	3	650 kg
	9.2	-	1	350 kg

Working speeds



	Km/h Minimum	Km/h Maximum			
385/95 R 25 (14.00 R 25)	0.46	80	62.6%		12 / R2
445/95 R 25 (16.00 R 25) 525/80 R 25 (20.50 R 25)	0.5	85	55.7%		4 / R2



Drive	Infinitely variable		Rope diameter/ length	Maximum single line pull
	0-134 m/min	Single line	15 mm / 220m	45 kN
	0-134 m/min	Single line	15 mm / 220m	45 kN
	0-1.2 min ⁻¹			
	Approx. 65 seconds to reach 82° boom angle			
	Approx. 400 seconds for boom extension from 13.1m-62m			

Liebherr LTM 1160-5.2

Liebherr LTM 1160-5.2

Lifting capacities



m	13.1m	17.6m	22.1m	26.6m	31.1m	35.5m	40m	44.5m	49m	53.5m	58m	62m				
	*															
2.5	180.0															
3.0	160.0	86.0	86.0	86.0												
3.5	139.3	86.0	86.0	86.0	86.0											
4.0	130.8	86.0	86.0	86.0	86.0											
4.5	123.1	86.0	86.0	86.0	86.0	75.7										
5.0	113.9	86.0	86.0	86.0	86.0	74.8										
6.0	95.2	86.0	85.1	86.0	85.7	73.0	58.6									
7.0	81.5	77.1	77.4	77.4	77.7	71.1	56.6	42.2								
8.0	71.1	68.7	69.5	69.7	69.4	68.2	54.7	39.7	33.1							
9.0	62.9	61.6	62.4	62.6	62.3	61.8	52.9	37.3	31.7	26.5						
10.0	56.2	55.1	56.1	56.3	56.0	55.5	51.0	35.3	30.2	25.6	22.0					
11.0	47.5	47.5	50.2	50.4	50.1	49.6	49.1	33.5	28.8	24.7	21.3	17.1				
12.0			45.2	45.5	45.2	46.0	45.5	31.7	27.5	23.7	20.6	16.7	13.7			
13.0			40.9	41.2	40.9	41.7	41.2	30.1	26.2	22.7	20.0	16.4	13.4			
14.0			37.0	37.3	38.2	37.8	37.3	28.6	24.9	21.8	19.3	16.0	13.1			
16.0				31.2	32.0	31.7	31.1	25.7	22.8	19.9	18.2	15.2	12.4			
18.0				27.2	27.4	27.0	26.4	23.3	20.8	18.4	17.1	14.4	11.8			
20.0				22.3	23.6	23.3	22.7	21.4	19.1	17.0	15.9	13.7	11.2			
22.0					20.6	20.2	19.6	19.7	17.5	15.7	14.8	12.9	10.6			
24.0					18.1	17.7	17.1	17.5	16.1	14.5	13.8	12.2	10.0			
26.0						16.1	15.7	15.4	14.8	13.4	12.8	11.5	9.3			
28.0						14.4	14.5	13.7	13.6	12.5	11.9	10.8	8.7			
30.0							13.0	12.2	12.2	11.6	11.1	10.2	8.1			
32.0							11.7	11.1	10.9	10.5	10.4	9.5	7.6			
34.0								10.5	9.8	9.8	9.4	8.9	7.1			
36.0								9.6	8.8	8.9	8.7	8.4	6.6			
38.0								7.6	8.0	8.0	8.1	7.8	6.1			
40.0									7.7	7.2	7.4	7.0	5.7			
42.0										7.4	6.5	6.3	5.4			
44.0											6.0	6.1	5.1			
46.0											5.8	5.5	4.8			
48.0												5.1	4.7	4.5		
50.0												4.7	4.3	4.2		
52.0													4.0	4.0		
54.0														3.6	3.6	
56.0															2.0	3.3
58.0																3.0
60.0																1.5

* Over rear.

Liebherr LTM 1160-5.2


TONNE

180

Liebherr LTM 1160-5.2

Lifting capacities

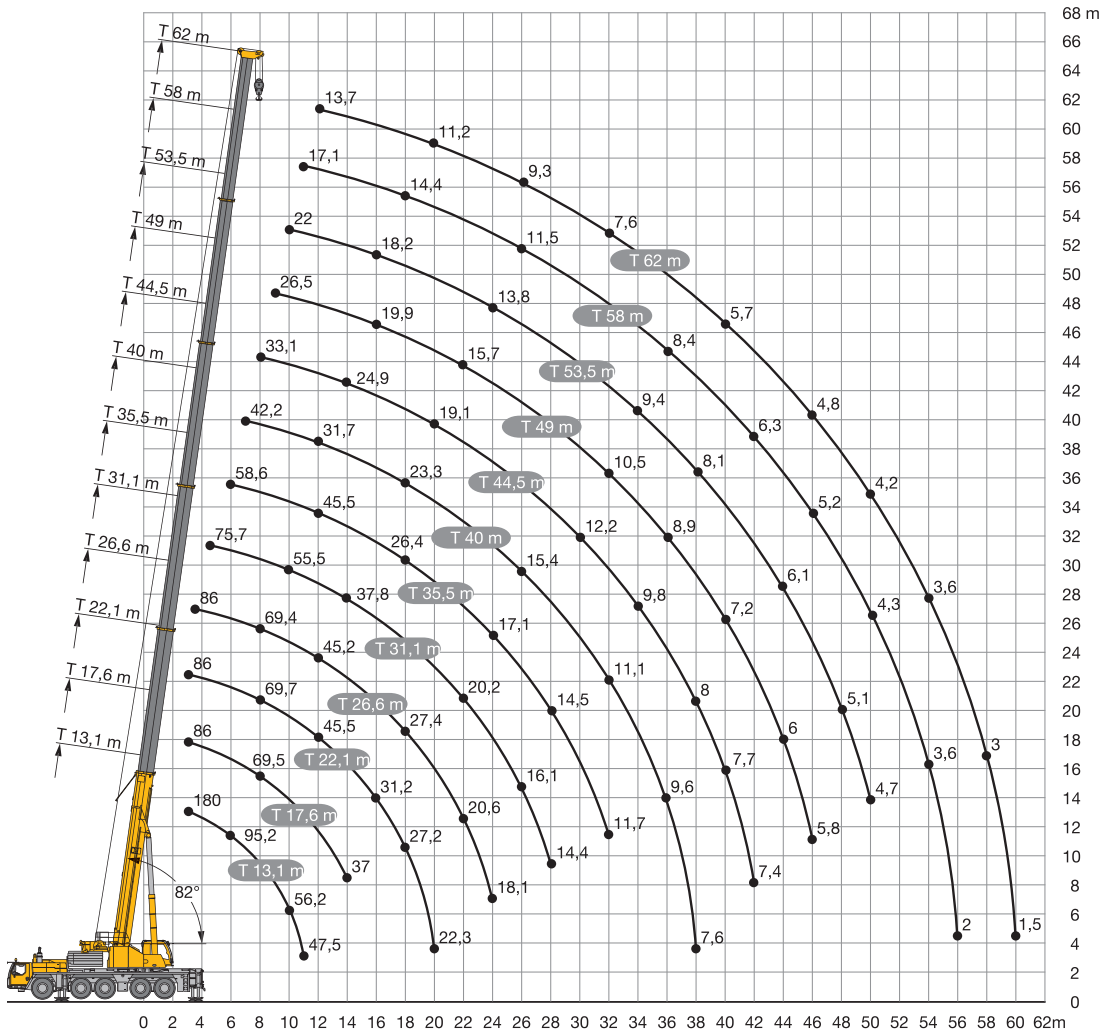


 m	13.1m	17.6m	22.1m	26.6m	31.1m	35.5m	40m	44.5m	49m	53.5m	58m	62m
3.0	86.0	86.0	86.0									
3.5	86.0	86.0	86.0	86.0								
4.0	86.0	86.0	86.0	86.0								
4.5	86.0	86.0	86.0	86.0	75.7							
5.0	86.0	86.0	86.0	86.0	74.8							
6.0	80.8	81.2	81.1	79.8	73.0	58.6						
7.0	67.4	68.6	68.8	67.2	62.0	56.6	42.2					
8.0	56.1	57.2	57.6	56.2	54.0	50.2	39.7	33.1				
9.0	47.2	48.4	48.9	49.3	46.2	43.0	37.3	31.7	26.5			
10.0	39.9	41.4	42.5	42.5	40.2	37.5	34.8	30.2	25.6	22.0		
11.0	34.4	36.0	36.8	36.9	35.4	33.0	31.6	28.8	24.7	21.3	17.1	
12.0		31.5	32.3	32.4	31.3	29.9	28.6	26.7	23.7	20.6	16.7	13.7
13.0		27.9	28.6	28.7	27.9	27.5	25.6	24.8	22.6	20.0	16.4	13.4
14.0		24.6	25.4	25.4	25.7	25.1	23.5	22.3	20.9	19.3	16.0	13.1
16.0			20.2	20.6	21.0	20.6	20.0	18.8	18.0	16.8	15.2	12.4
18.0			16.6	17.3	17.2	17.0	16.9	16.0	15.2	15.0	14.0	11.8
20.0			13.9	14.5	14.5	14.3	14.4	14.4	13.6	12.8	12.0	11.2
22.0				12.4	12.3	12.6	12.4	12.3	11.7	11.0	10.2	9.9
24.0				10.7	10.6	10.9	10.6	10.5	10.1	9.5	8.8	8.5
26.0					9.4	9.5	9.2	9.1	8.8	8.2	7.5	7.3
28.0					8.3	8.3	8.1	8.0	7.6	7.1	6.4	6.3
30.0						7.3	7.1	6.9	6.5	6.2	5.5	5.4
32.0						6.5	6.2	6.0	5.6	5.2	4.7	4.6
34.0							5.4	5.3	4.8	4.5	4.0	3.9
36.0							4.8	4.6	4.2	3.8	3.4	3.3
38.0							4.2	4.0	3.6	3.2	2.8	2.8
40.0								3.5	3.1	2.7	2.2	2.3
42.0								3.0	2.6	2.2	1.8	1.8
44.0									2.2	1.8		
46.0									1.8			

Liebherr LTM 1160-5.2

Liebherr LTM 1160-5.2

Lifting heights



* Over rear, with additional equipment

Liebherr LTM 1160-5.2