

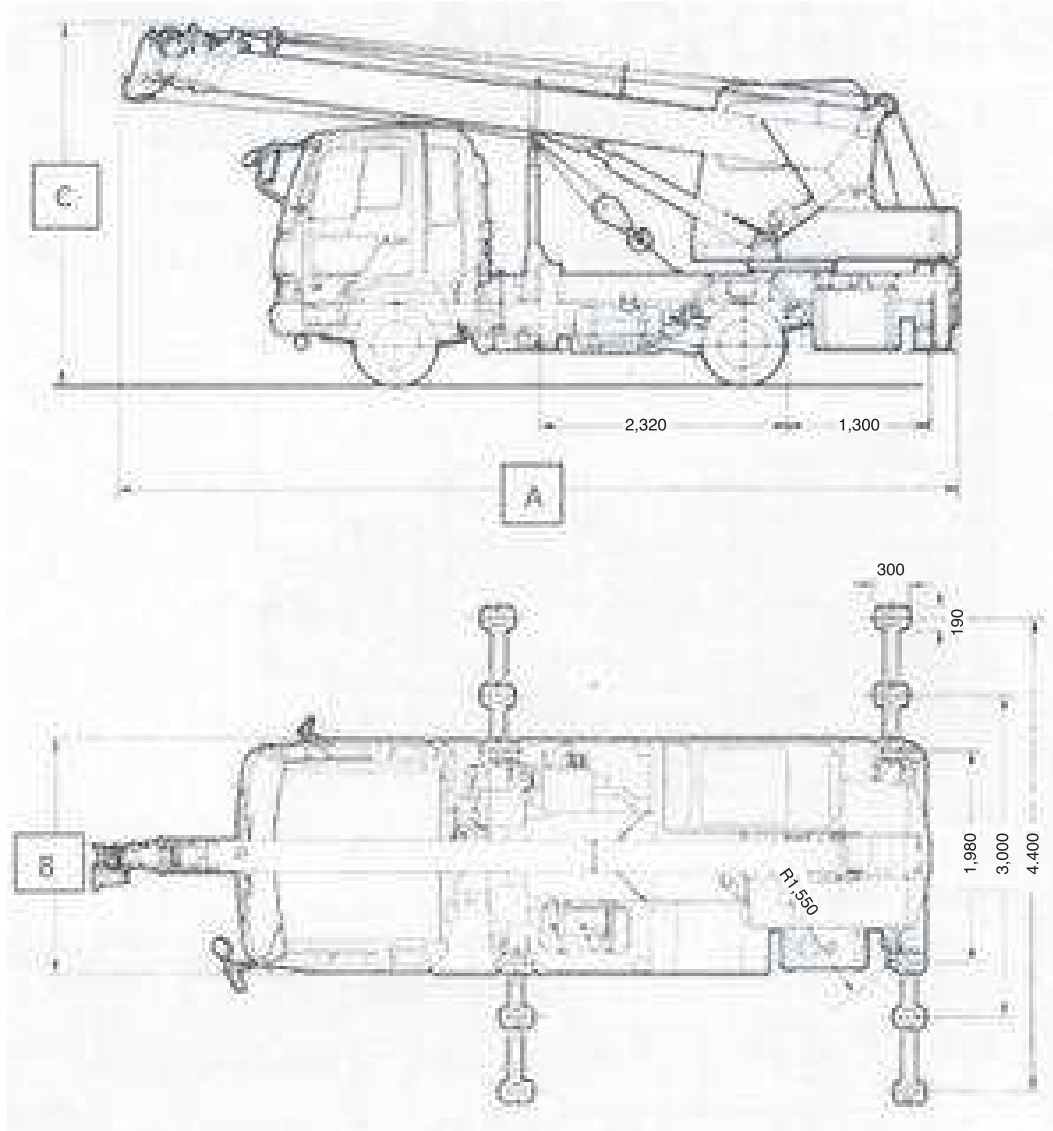
TONNE

7

Kato NK75R V2

Truck mounted crane

Dimensions



Turning circle radius	5.3m
Length A	7.750m
Width B	2.19m
Height C	3.29m
Wheel base	3.31m
Vehicle gross weight	7,940kg

Kato NK75R V2

Kato NK75R V2

Lifting capacities

Kato NK75R, 7t Hydraulic truck crane

Outrigger span 4.4m with front jack 360° duties

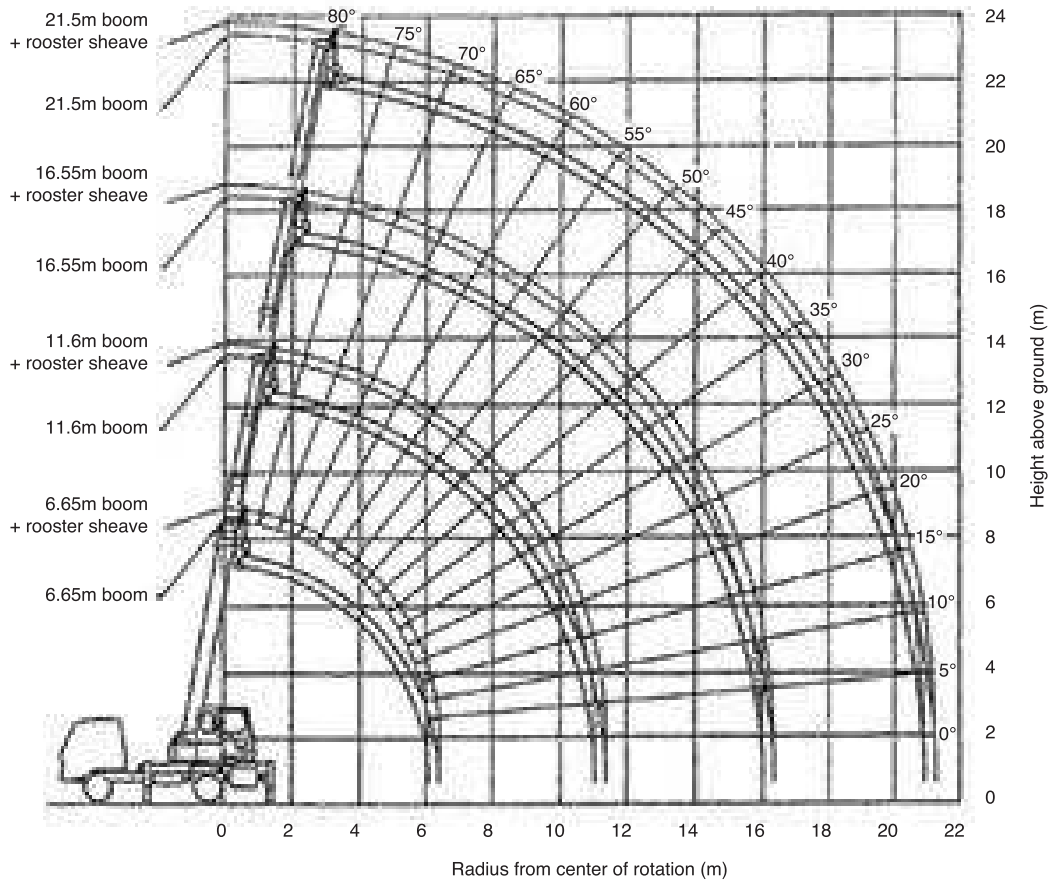
Boom length Radius m	6.65	11.6	16.55	21.5	6.55-21.5 boom + rooster sheave
2.5	7.0	4.9	3.9	-	1.3
3	6.1	4.9	3.9	2.0	1.3
4	4.55	4.5	3.6	2.0	1.3
5	3.15	3.25	3.05	2.0	1.3
6	2.35	2.45	2.5	1.7	1.3
7	-	1.9	2.0	1.45	1.3
8	-	1.55	1.6	1.25	1.2
9	-	1.25	1.35	1.1	1.05
10	-	1.05	1.15	1.0	0.95
11	-	0.9	0.95	0.9	0.85
12	-	-	0.8	0.82	0.75
13	-	-	0.65	0.7	0.6
14	-	-	0.55	0.6	0.5
15	-	-	0.45	0.52	0.4
16	-	-	0.4	0.45	0.35
17	-	-	-	0.37	0.32
18	-	-	-	0.31	0.26
19	-	-	-	0.25	0.2
20	-	-	-	0.2	0.15
20.7	-	-	-	0.17	0.12

Standard hook for 7 ton = 70kg, for 1.3t = 20kg.

Kato NK75R V2

Kato NK75R V2

Lifting heights



Note:

1. Deflection of boom and jib is excluded
2. All outriggers fully extended with front jack

Kato NK75R V2