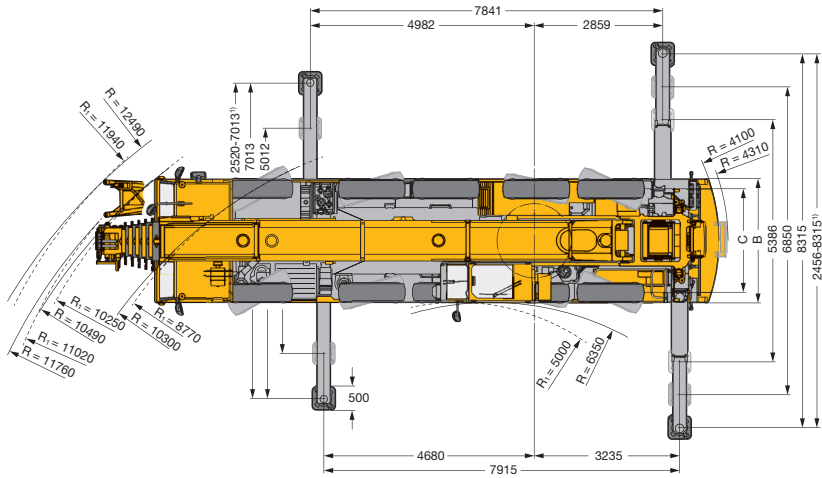
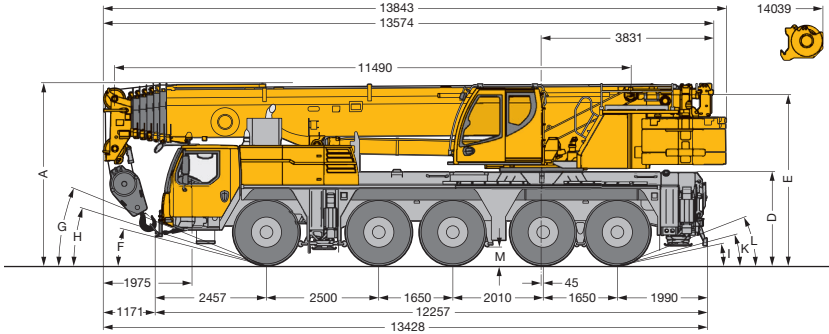



Liebherr LTM 1110-5.1

All terrain mobile crane

Dimensions




	A	A 125mm*	B	C	D	E	F	G	H	I	K	L	M
385/95 R 25 (14.00 R 25)	3950	3825	2750	2360	2000	3710	13°	21°	15°	11°	13°	20°	335
445/95 R 25 (16.00 R 25)	4000	3875	2750	2300	2050	3760	14°	23°	17°	12°	15°	21°	385
525/80 R 25 (20.5 R 25)	4000	3875	2850	2320	2050	3760	14°	23°	17°	12°	15°	21°	385

*Lowered

Liebherr LTM 1110-5.1







Weights/Working speeds

Hook block

	Load t	Number of sheaves	Number of lines	Weight
	82.2	7	12	1240 kg
	75.9	5	10	900 kg
	49.7	3	7	700 kg
	22	1	3	460 kg
	7.4	-	1	250 kg

Working speeds




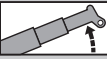
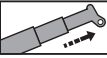


	Km/h Minimum	Km/h Maximum			
385/95 R 25 (14.00 R 25)	0.44	80	> 60%*		12 / R2
445/95 R 25 (16.00 R 25) 525/80 R 25 (20.50 R 25)	0.48	85	56.5%*		4 / R2

* Theoretical gradeability

Crane superstructure



Drive	Infinitely variable		Rope diameter/ length	Maximum single line pull
	0-125 m/min	Single line	19 mm / 250m	74 kN
	0-125 m/min	Single line	19 mm / 250m	74 kN
	0-1.5 min ⁻¹			
	Approx. 45 seconds to reach 83° boom angle			
	Approx. 419 seconds for boom extension from 11.5m-60m			

Liebherr LTM 1110-5.1

Liebherr LTM 1110-5.1

Lifting capacities



m	11.5m		15.2m	18.9m	22.6m	26.4m	30.1m	33.8m	37.5m	38.8m	41.2m	42.5m
	*											
3.0	110.0	69.5	68.0	67.3	66.4	58.3						
3.5	98.9	69.5	68.6	67.9	66.8	60.0						
4.0	83.0	69.5	68.9	68.4	66.5	60.3	50.6					
4.5	78.2	69.5	69.0	68.7	66.9	59.9	50.7	40.8				
5.0	73.8	66.7	66.0	65.7	65.2	59.7	50.3	41.0				
6.0	66.3	55.9	55.5	55.5	54.9	53.9	48.3	40.3	31.6	27.9	25.6	
7.0	56.9	47.1	47.9	48.3	48.3	47.0	44.4	38.8	30.4	26.9	25.0	23.1
8.0	48.6	40.4	41.2	41.6	41.6	41.4	40.1	36.3	29.0	25.8	24.3	22.3
9.0	41.0	35.1	36.1	36.3	36.6	36.8	35.9	33.7	27.5	24.7	23.5	21.5
10.0			31.9	32.0	32.7	32.6	32.1	30.9	26.0	23.2	22.6	20.7
11.0			28.3	28.4	29.0	29.0	28.7	27.8	24.6	21.8	21.6	19.8
12.0			25.2	25.9	26.0	25.9	25.7	24.9	23.2	20.6	20.7	19.0
13.0			22.5	23.1	23.3	23.2	23.0	22.5	21.5	19.5	19.7	18.1
14.0				20.9	21.0	20.9	20.6	20.3	19.7	18.4	18.8	17.3
15.0				18.9	19.1	19.0	18.7	18.4	18.6	17.3	17.7	16.5
16.0				17.2	17.4	17.3	17.0	17.1	17.1	16.3	16.4	15.7
18.0					14.8	14.6	14.7	14.8	14.4	14.2	13.9	13.6
20.0					12.7	12.4	12.8	12.6	12.1	11.9	12.1	11.4
22.0						11.2	11.1	10.8	10.7	10.1	10.5	9.6
24.0							9.9	9.7	9.3	9.4	8.6	9.1
26.0								8.5	8.2	8.1	7.4	7.9
28.0									7.2	7.1	6.4	7.2
30.0										6.7	6.3	5.9
32.0											5.9	5.5
34.0												5.6
36.0											5.3	5.2
38.0												4.8
40.0												4.4
42.0												4.1
44.0												3.8

* ± 0° Over rear



m	45m	46.9m	48.7m	51.3m	52.4m	54.3m	55.6m	56.1m	58.1m	58.7m	59.4m	60m
	7.0	20.4										
8.0	20.0	18.1	16.7									
9.0	19.5	17.9	16.6	11.5	13.2	10.8	10.1	10.7				
10.0	18.9	17.5	16.4	11.3	13.1	10.7	10.0	10.6	9.6	9.1	8.9	8.6
11.0	18.2	17.1	16.1	11.1	13.0	10.5	9.9	10.5	9.5	9.0	8.8	8.5
12.0	17.5	16.5	15.7	10.8	12.8	10.3	9.7	10.4	9.4	8.9	8.7	8.5
13.0	16.8	15.7	15.2	10.5	12.6	10.1	9.6	10.2	9.2	8.8	8.6	8.4
14.0	16.1	15.0	14.6	10.1	12.3	9.9	9.4	10.1	9.1	8.7	8.5	8.3
15.0	15.4	14.3	14.0	9.7	12.0	9.6	9.2	9.9	8.9	8.6	8.4	8.2
16.0	14.7	13.7	13.4	9.3	11.7	9.3	9.0	9.7	8.8	8.5	8.2	8.1
18.0	13.3	12.4	12.3	8.7	10.9	8.8	8.4	9.1	8.4	8.1	8.0	7.8
20.0	11.8	11.2	11.2	8.0	10.1	8.3	7.9	8.6	8.0	7.7	7.6	7.4
22.0	10.2	9.6	9.7	7.4	9.3	7.8	7.4	8.1	7.6	7.3	7.1	7.0
24.0	8.9	8.1	8.7	6.9	8.3	7.2	6.9	7.6	7.2	6.9	6.7	6.5
26.0	7.9	6.9	7.5	6.4	7.2	6.8	6.5	7.0	6.7	6.5	6.3	6.0
28.0	6.8	6.0	6.6	6.0	6.5	6.3	6.1	6.2	6.2	6.1	5.8	5.5
30.0	5.9	5.6	5.9	5.6	5.7	5.7	5.6	5.3	5.3	5.3	5.3	5.1
32.0	5.4	5.3	5.2	5.1	4.9	5.0	4.9	4.6	4.6	4.6	4.6	4.5
34.0	4.8	4.9	4.6	4.6	4.3	4.4	4.3	4.0	4.1	4.1	4.0	4.0
36.0	4.3	4.4	4.1	4.1	3.9	3.9	3.9	3.6	3.6	3.6	3.6	3.5
38.0	3.9	4.0	3.7	3.7	3.5	3.5	3.5	3.2	3.2	3.2	3.2	3.1
40.0	3.6	3.6	3.3	3.4	3.1	3.1	3.1	2.8	2.9	2.9	2.8	2.8
42.0	3.3	3.3	3.0	3.0	2.8	2.8	2.8	2.5	2.5	2.5	2.5	2.5
44.0		3.0	2.7	2.7	2.5	2.5	2.5	2.2	2.3	2.2	2.2	2.2
46.0			2.5	2.5	2.3	2.3	2.2	2.0	2.0	2.0	2.0	1.9
48.0				2.3	2.0	2.1	2.0	1.7	1.8	1.8	1.7	1.7
50.0					1.8	1.9	1.8	1.5	1.5	1.5	1.5	1.5
52.0						1.6	1.6	1.2	1.3	1.3	1.3	1.2
54.0									1.1	1.1	1.1	1.0
56.0										0.7		

TONNE

110

Liebherr LTM 1110-5.1

Lifting heights

Liebherr LTM 1110-5.1

