

CADMAN

CRANES LTD

SPECIALIST LIFTING EQUIPMENT

CADMANCRANES.COM



PROVIDING AN UNRIVALLED SERVICE TO OUR CUSTOMERS FOR OVER 50 YEARS...

Cadman Cranes is the leading crane hire company in East Anglia with over 50 years experience and a reputation for quality, reliability and safety.

We have always placed great importance on delivering so much more than just crane hire. Our values are focussed around the success of both our clients and our operators and we take great pride in going to extra mile on every job, no matter how small.

We are always looking to add value to the hard work our customers put in on a daily basis and offer a full-service solution that goes above and beyond just crane hire. If you would like to work with us or are looking to add a safe, reliable and efficient crane hire solution to your list of approved suppliers, we would love to hear from you.

OUR SERVICES

We have invested in a range of industry leading specialist lifting equipment to assist with a variety of customer requirements. Cadman Cranes pride ourselves on providing an exceptional level of service to our diverse base of customers and our commitment to investing in modern, robust and safe lifting equipment for our range of mobile cranes for hire demonstrates our dedication.



Our mobile cranes travel with their associated rigger mats where applicable and for our larger cranes, transport is available for necessary steel mats.



Man Riding Basket (1 Man & 2 Man, Rectangular & Cylindrical)	4
Hydraulic remote-controlled grab attachment	5
Roof truss lifting system	6
Caravan lifting system	7
Hot Tub lifting system	8
Modular beams from 1t to 50t	9
Pallet Forks with safety net	10
Block Grab with safety net	11
Fall arrest blocks & safety harness	12
Concrete, roll over & boat skips	13
Test weights	14
Container lifting attachments	15
Outrigger spreader mats (up to 6m²)	16
Beam clamps	17
Chain blocks	18
Load cells	19
Selection of timber and steel mats	20

MAN RIDING BASKET

1 MAN & 2 MAN, RECTANGULAR & CYLINDRICAL



Work at Height is one of the biggest challenges we face today and there is no safer more stable solution using a Man-Riding Basket supported by a mobile crane. The ability to reach great height and distance along with a mobile crane's millimetre precision make this the tool of choice for many of the countries biggest industries.

- Multiple Size Options
- Reach up to 70m up and 70m out
- Removable panels for low level working
- Integral lifting chains and anchor
- Checked and Inspected before every use
- Easy to transport





Our unique grab system can be used with any crane to achieve reaches of up to 70m. Designed specifically by Cadman Cranes for tank clearance in the waste water and anaerobic digestion industries this revolutionary piece of equipment provides a safer, quicker solution in a number of varied applications. [Click here for more information.](#)

- 500litre clamshell grab
- Reach up to 70m
- Easy to transport and assemble
- The safest solution
- Huge time and cost savings over alternative equipment





We are in one of the busiest regions in the country for housebuilding and where there are houses there are roof trusses. We lift tens of thousands of trusses every years and this simple attachment makes the process considerably safer, removing the need for awkward, unplanned work at height required to attach lifting chains and slings. They are so effective, we have one on every crane.

- Lightweight
- Simple to attach and use
- Removes need for work at height





It is surprising how regularly we are asked to lift these 'mobile' homes. The problem is, they are not designed for to go up and very difficult to lift without causing substantial damage. For this reason many crane companies refuse to get involved. But that is not the Cadman way. Instead we developed, manufactured and tested a system of beams and spreaders that allow us to lift many types of caravan safely, quickly and without damage.

- Quick to assemble
- Widths up to 14ft
- Weights up to 10t
- Completely damage free solution

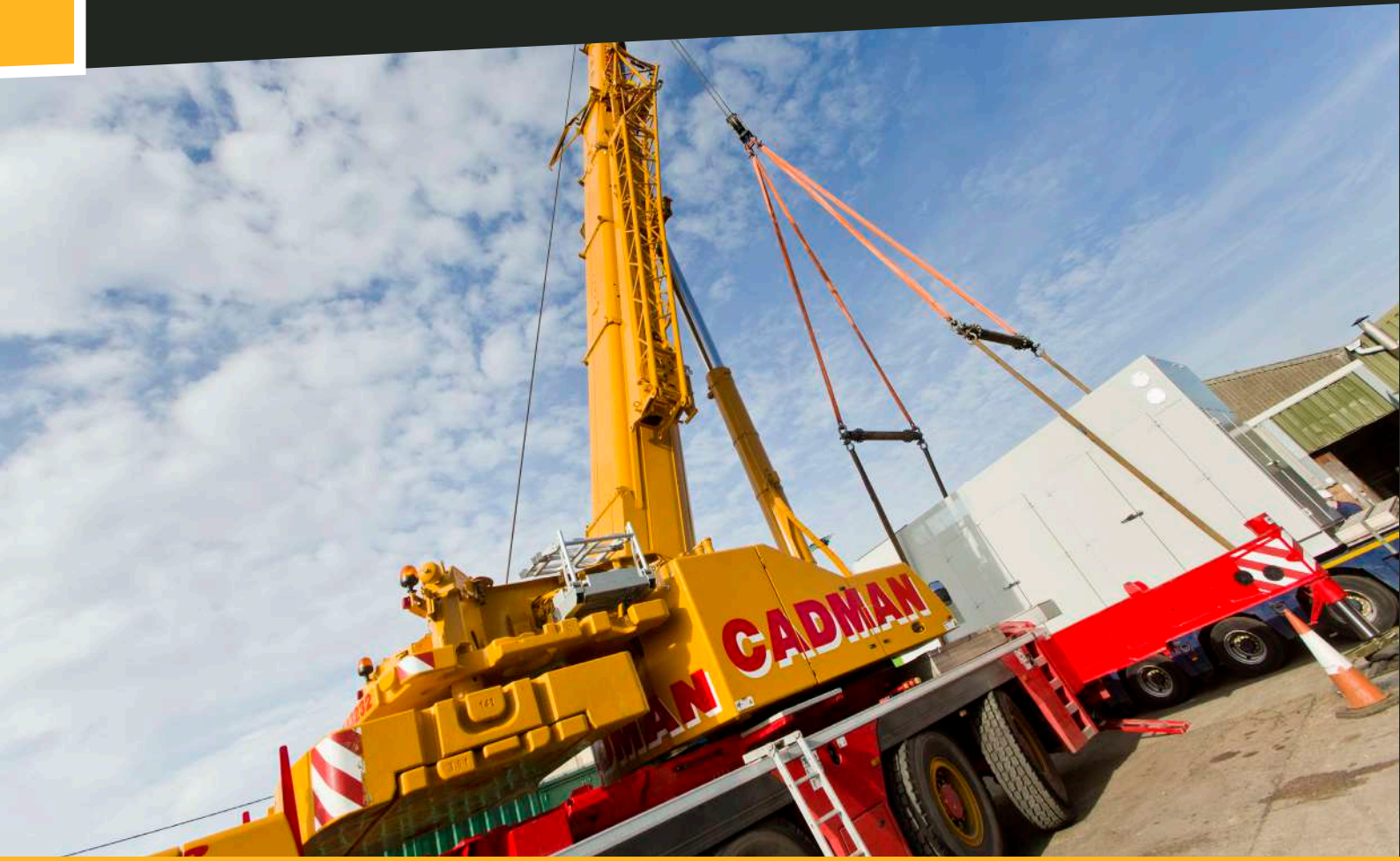




Hot tubs are incredibly popular these days and demand seems to be increasing. The problem comes when unscrupulous hot-tub salespeople do not properly explain the requirements for space and access to their customers which leads to many desperate calls from upset residents that cannot get their hot tub into their back gardens. We have recognised this and proudly offer a simple, inexpensive solution that can be mobilised very quickly across the region.

- Hot tubs and swim spas lifted
- Quick response times
- Contract lifting for peace of mind (see more)
- Safe, damage free solution
- Friendly, supportive customer service





It may be that head room is limited, or that lifting points have been designed to only be lifted with vertical lifting accessories, or it may be that lifting accessories must be kept away from important delicate fixtures and equipment. Whatever the reason, with a range of sizes, lengths and configuration, Cadman have the beam solution.

- Lifting capacity up to 50t
- Length up to 12m
- Light weight options
- Easy to transport and assemble
- Ideal for boats, caravans, containers, bridges, AH Units and many more applications





There are many ways to move or lift a pallet but this is the most safe and secure. When you have to lift a pallet onto a multi-story building or over a busy construction site using this system is the best way to ensure that there is no chance of falling debris and the pallet is delivered in exactly the same condition it left the ground.

- Quick and easy to use
- Fully tested and certificated every 6 months
- Easy to deliver
- Integral lifting chains
- The safest solution

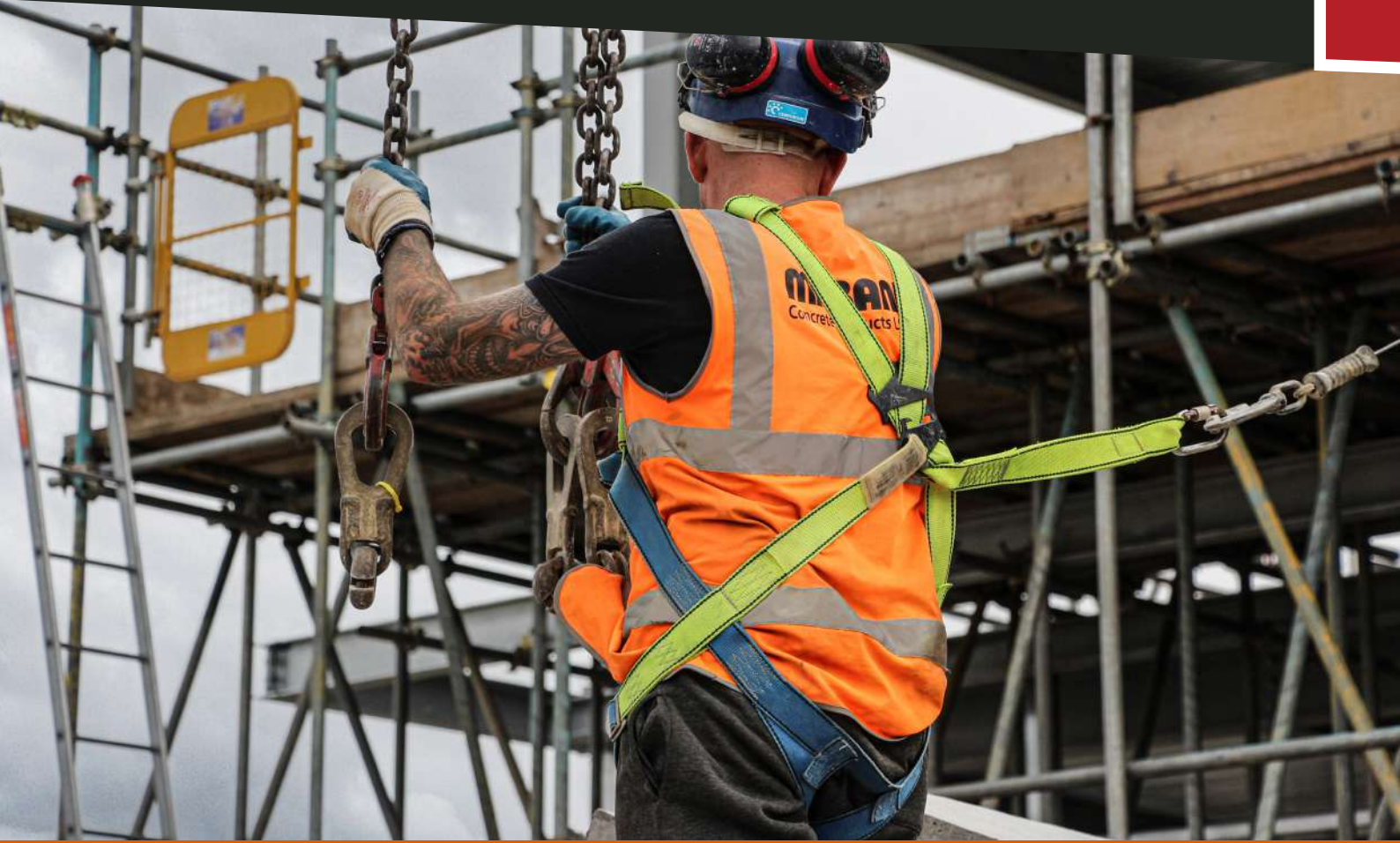




In traditional house building concrete blocks are one of the most common materials and they are delivered in packs of 48 or 72. The block grab and safety net is the only safe way to lift these packs and avoid the risk of injury and disruption.

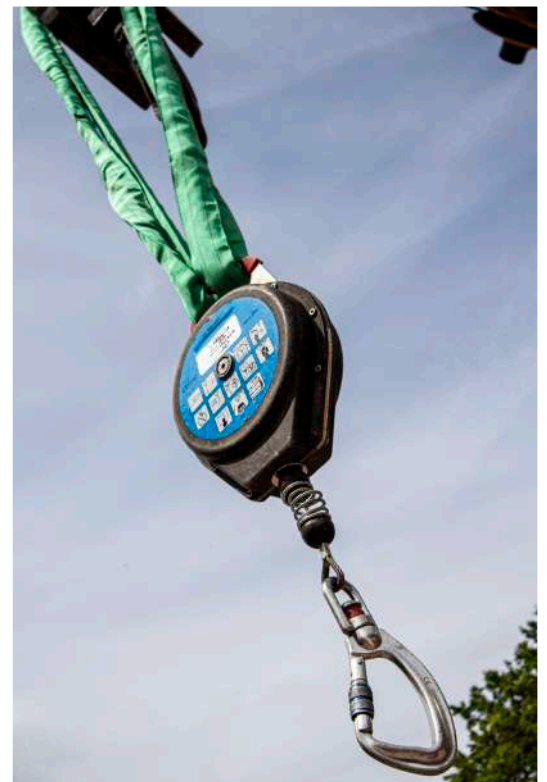
- Quick and easy to use
- Fully tested and certificated every 6 months
- Easy to deliver
- Integral lifting chains
- The safest solution





Fall arrest is the last method of work at height control measure that should be considered because everything should be done to avoid falls altogether. But sometimes it is the only possible solution. All of our lift teams come equipped with this system at no extra charge and we attach it to our crane hooks which has the added advantage of an integral method of rescue.

- Lightweight and compact
- Adjustable to fit all operatives
- Easy to use
- Inexpensive to hire and deliver
- Inspected and certificated every 6 months



13 CONCRETE, ROLL OVER & BOAT SKIPS



Reinforced concrete cast on site is still a very popular form of construction but it is not always possible to deliver concrete where its needed. Concrete pumps are one solution and the other is to lift it using a crane. When lifting using a crane you need a strong, versatile container that can be discharged safely and efficiently. The concrete skip is ideal and comes in various sizes and configurations.

- Sizes up to 3m²
- Roll-over or discharge hose configurations
- Tested and certificated every 6 months
- Easy to use
- Inexpensive to hire and deliver.



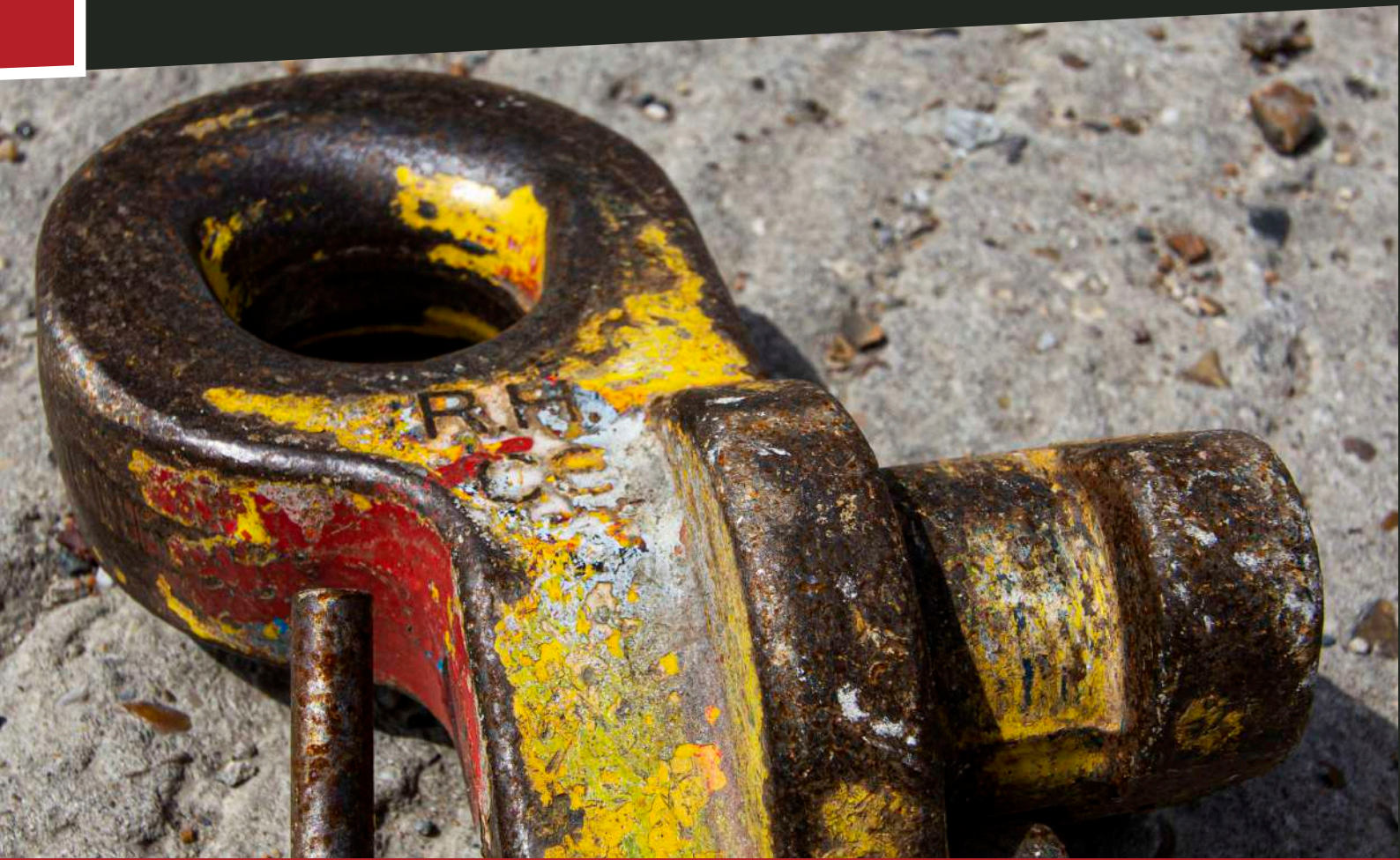


When manufacturing a new load bearing item it is necessary to apply 125% of the maximum stated capacity of the item. To do this you need test weights which can be anything from water, to sand to steel. Our steel test weights used in conjunction with our cranes offer a quick simple solution.

- Various sizes and configurations
- Weights up to 30t
- Easy to lift and transport
- Quick to assemble and use

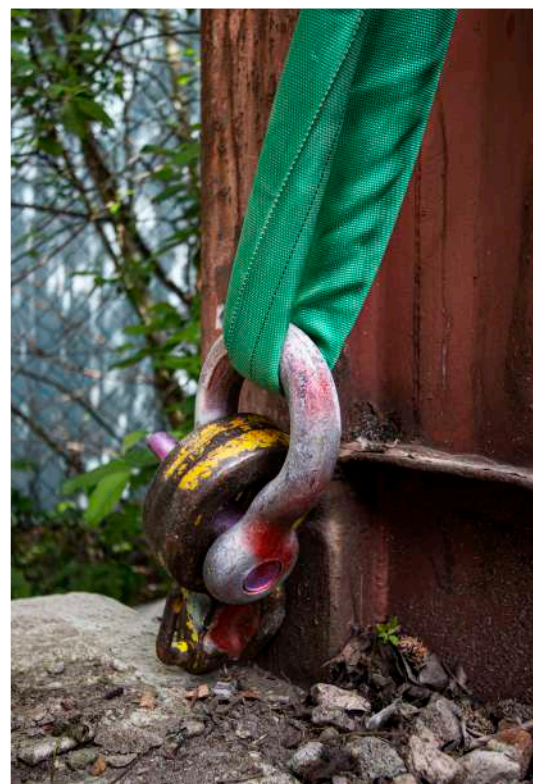


15 CONTAINER LIFTING ATTACHMENTS



Shipping containers are designed to be lifted by ship to shore container cranes or port cranes using specialist lifting frames. But the reality is once a shipping container is inland there are many more occasions where they need to be lifted. The container lifting attachment, or shoe, provides a perfect, safe and easy solution.

- Lightweight and compact
- Any size or weight of container
- Simple to use
- Inexpensive to hire and deliver



OUTRIGGER SPREADER MATS

UP TO 6M²

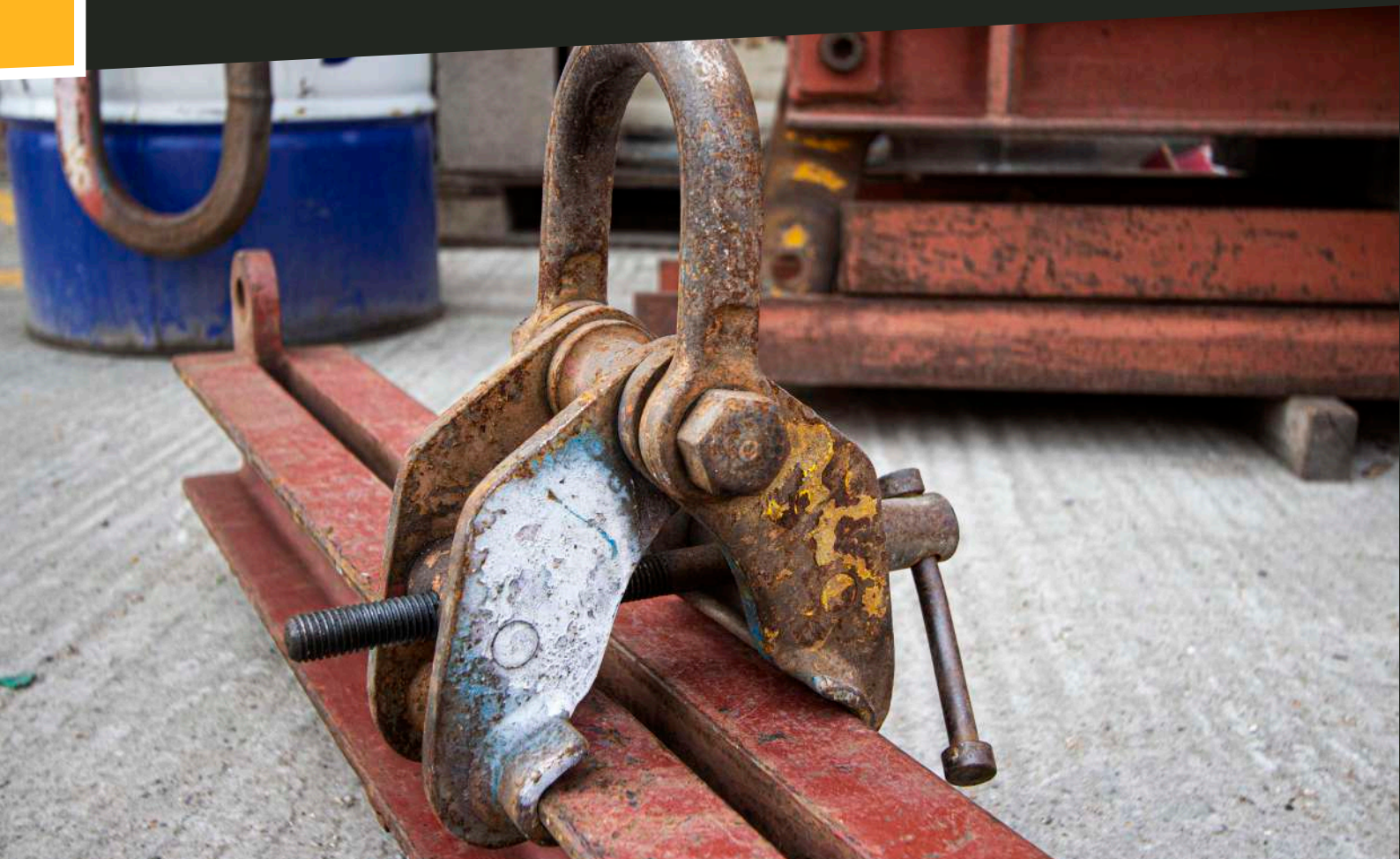
16



Poor ground conditions and incorrect outrigger mat selection is the main cause of accidents in the crane industry and that's why we stock a huge range of mats for all applications. With from 0.25m² up to 6m² in nylon, steel and timber, we can spread the load and reduce the ground bearing pressure to safe levels on almost any surface with even the biggest cranes.

- A huge range of lengths, widths and thicknesses
- Available in nylon, timber or steel
- Simple to use
- Inexpensive to hire and transport





Working inside buildings can be tricky and one of the main reasons is the restricted headroom. A beam clamp is a great tool for reducing the height of the lift removing the need for chains or slings and allowing for direct attachment to the crane hook.

- Lightweight and easy to handle
- Tested and certificated every 6 months
- Range of sizes and capacities
- Easy and inexpensive to hire and transport





Chain blocks are a fantastic tool for lifting with precision. Loads with an uneven weight distribution or irregular lifting points can require fine adjustment to ensure the item is lifted safely and the chain block is the perfect piece of equipment for this.

- Lightweight and easy to handle
- Tested and certificated every 6 months
- A Range of sizes and capacities
- Easy and inexpensive to hire and transport





Sometimes our customers need to know the exact weight of the item being lifted. Modern cranes can do this through the onboard computer but for accuracy and piece of mind, nothing beats a calibrated load cell.

- Lightweight and easy to handle
- Calibrated before every use
- Accurate to 100 grams
- Easy and inexpensive to hire and transport





It can be a challenge to get heavy cranes to where they need to go. Our range of matting makes the task considerably easier. Used for temporary roadways and outrigger support we have the solution for any situation.

- Huge range of sizes
- Different materials to suit the environment
- Easy to transport and lay
- Inexpensive to hire and deliver



CADMAN

C R A N E S L T D

Lindsey House,
45a Brunel Way,
Severalls Industrial Park,
Colchester,
Essex,
CO4 9QX

Tel: 01206 986610

Email: info@cadmancranes.com

cadmancranes.com