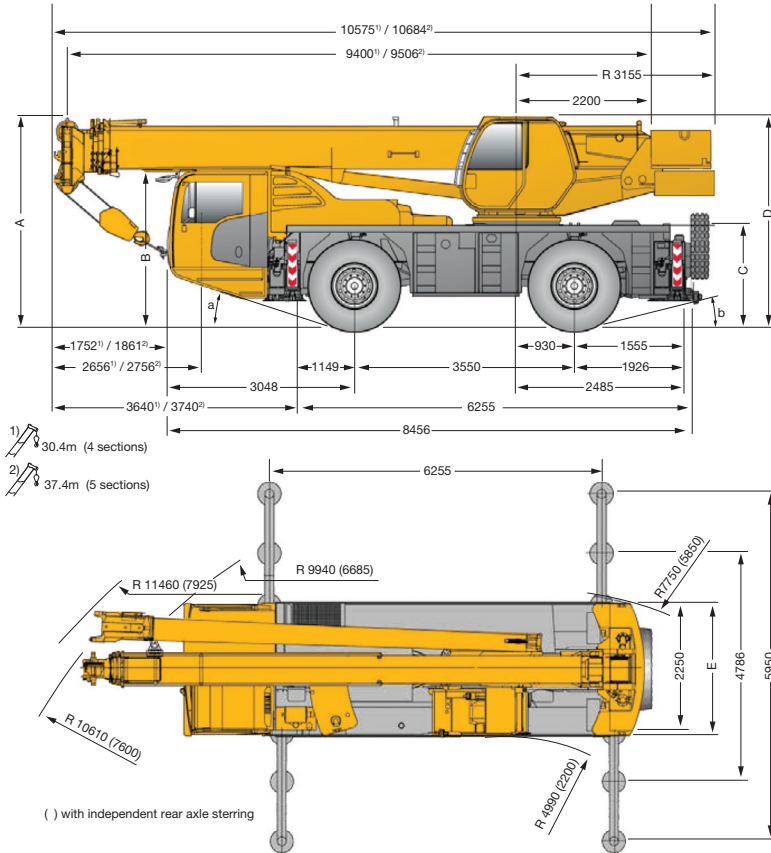



Terex AC 40/2 (L)

All terrain crane

Dimensions



	A*	B*	C*	D*	E	a	b
14.00 X 25	3350	2475	1580	3350	2550	11°	11°
16.00 X 25	3400	2525	1630	3400	2550	13°	13°
20.5 X 25	3400	2525	1630	3400	2850	13°	13°


*Suspension lowered to 80mm

Terex AC 40/2 (L)


Terex AC 40/2 (L)

Weights/Working speeds

AC 40-2 L

	Max loads	Tires	Hook block	Folding swing	Current brake	Counter weight
	2 x 12	14.00 R 25	15t	-	-	2.0t
	2 x 12 -A	16.00 R 25	15t	8m	X	3.0t
	2 x 13 -B	16.00 R 25	15t	-	X	3.6t
	2 x 15	16.00 R 25	40t	8m	X	5.5t

AC 40-2

	Max loads	Tires	Hook block	Folding swing	Current brake	Counter weight
	2 x 12	16.00 R 25	15t	-	X	2.0t
	2 x 1	14.00 R 25	25t	-	-	2.0t
	2 x 13 -A	16.00 R 25	25t	15m	X	3.0t
	2 x 13 -B	16.00 R 25	40t	-	X	3.6t
	2 x 15	16.00 R 25	40t	15m	X	5.5t




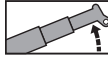



Length of stroke

V+



	Supporting force		Travel speed	Drive	Working speed	Max line pull	Rope diameter	Rope length
	26t	32t	80km/h*		115 m/min	45.0 kN	16 mm	160 m
	550mm	550mm						

* Depending on tire type, size and country specific legislation.

Gradeability road

	445/95 R 25 16.00 R 25			2.2 min ⁻¹
				(4 sections) 55 seconds (9.4m - 30.4m) (5 sections) 90 seconds (9.5m - 37.4m)
	58% (4 sections)	58% (5 sections)		36 seconds (-4° - 80°)
	58% (4 sections)	58% (5 sections)		

Hook block

	Number of lines	Possible load of hook block	Hook block	Number of sheaves in boom head	Weight of hook block	Distance head sheaves axle - hook ground
	1	4.5	5-0-16	4/5	82	1.00m
	3	13.5	15-1-16	4/5	170	1.50m
	5	22.5	22.5, 5-2-16	4/5	215	1.80m
	7	25.0	25-3-16	4/5	330	1.80m
	7	31.5	32-3-16	4/5	340	1.80m
	8	36.0	40-4-16	4	385	1.80m
	9	40.0	40-4-16	5	385	1.80m


Terex AC 40/2 (L)

Lifting capacities

ISO



5.5t

 m	9.50	13.00	16.50	19.80	23.50	26.80	30.50	34.10	37.40
	t	t	t	t	t	t	t	t	t
2.6	40.00 ¹⁾								
3.0	35.00 ¹⁾								
3.0	32.00	32.00	25.95	18.95					
3.5	27.45	27.45	23.70	18.35	18.40				
4.0	24.90	24.90	22.00	18.60	17.55				
4.5	22.60	22.60	20.45	17.95	16.25	14.45			
5.0	20.60	20.60	19.05	16.75	15.15	13.85			
6.0	17.00	17.85	17.25	14.70	13.30	12.20	10.00		
7.0	14.45	14.95	14.60	12.75	11.80	10.90	9.65	7.45	
8.0		11.85	12.15	11.65	10.20	9.75	8.80	7.45	5.55
9.0		9.75	10.00	10.10	8.70	8.55	8.00	7.05	5.35
10.0		8.15	8.40	8.55	7.50	7.40	7.30	6.70	5.00
11.0			7.20	7.35	6.95	6.50	6.40	6.15	4.65
12.0			6.25	6.40	6.50	5.70	5.70	5.60	4.40
13.0			5.45	5.60	5.70	5.25	5.05	5.00	4.15
14.0			4.85	4.95	5.05	4.95	4.50	4.50	3.95
15.0				4.40	4.50	4.60	4.00	4.05	3.70
16.0				3.95	4.05	4.10	3.55	3.65	3.45
17.0				3.55	3.65	3.70	3.15	3.25	3.25
18.0					3.30	3.35	2.80	2.90	3.00
19.0					3.00	3.05	2.50	2.60	2.70
20.0					2.75	2.80	2.25	2.35	2.40
21.0					2.50	2.55	2.00	2.25	2.15
22.0						2.35	1.80	2.10	1.95
23.0						2.15	1.60	1.95	1.75
24.0						1.95	1.45	1.75	1.60
25.0							1.35	1.60	1.45
26.0							1.25	1.45	1.30
27.0							1.15	1.35	1.15
28.0							1.05	1.20	1.05
29.0								1.10	0.90
30.0								1.00	0.80
31.0								0.90	0.70
32.0									0.60
33.0									0.55


¹⁾ Over rear.

Lengths may vary depending on various telescoping sequences.

ISO



5.5t

 m	9.50	13.00	16.50	19.80	23.50	26.80	30.50	34.10	37.40
	t	t	t	t	t	t	t	t	t
3.0	30.45	30.05	25.95	18.95					
3.5	27.10	26.75	23.70	18.35	18.40				
4.0	24.35	23.95	22.00	18.60	17.55				
4.5	22.05	21.65	19.65	17.95	16.25	14.45			
5.0	20.05	20.00	18.70	15.95	15.15	13.85			
6.0	15.40	15.25	14.55	13.90	11.95	11.55	10.00		
7.0	11.55	12.05	11.75	11.30	9.70	9.45	9.20	7.45	
8.0		9.55	9.75	9.50	8.75	7.90	7.75	7.45	5.55
9.0		7.80	8.05	8.10	7.85	6.90	6.60	6.45	5.35
10.0		6.50	6.75	6.90	6.85	6.40	5.70	5.60	5.00
11.0			5.75	5.85	6.00	5.90	4.95	4.90	4.65
12.0			4.95	5.05	5.20	5.20	4.35	4.30	4.30
13.0			4.30	4.45	4.55	4.60	3.85	3.85	3.80
14.0			3.75	3.90	4.00	4.05	3.40	3.60	3.40
15.0				3.45	3.55	3.60	3.00	3.35	3.00
16.0				3.05	3.15	3.20	2.70	3.00	2.70
17.0				2.70	2.80	2.90	2.45	2.70	2.45
18.0					2.50	2.60	2.30	2.40	2.20
19.0					2.25	2.35	2.10	2.15	1.95
20.0					2.05	2.10	1.95	1.90	1.70
21.0					1.85	1.90	1.80	1.70	1.50
22.0						1.70	1.70	1.50	1.35
23.0						1.55	1.55	1.35	1.20
24.0						1.40	1.45	1.20	1.05
25.0							1.30	1.10	0.90
26.0							1.20	0.95	0.80
27.0							1.05	0.85	0.65
28.0							0.95	0.75	0.55
29.0								0.65	
30.0								0.55	

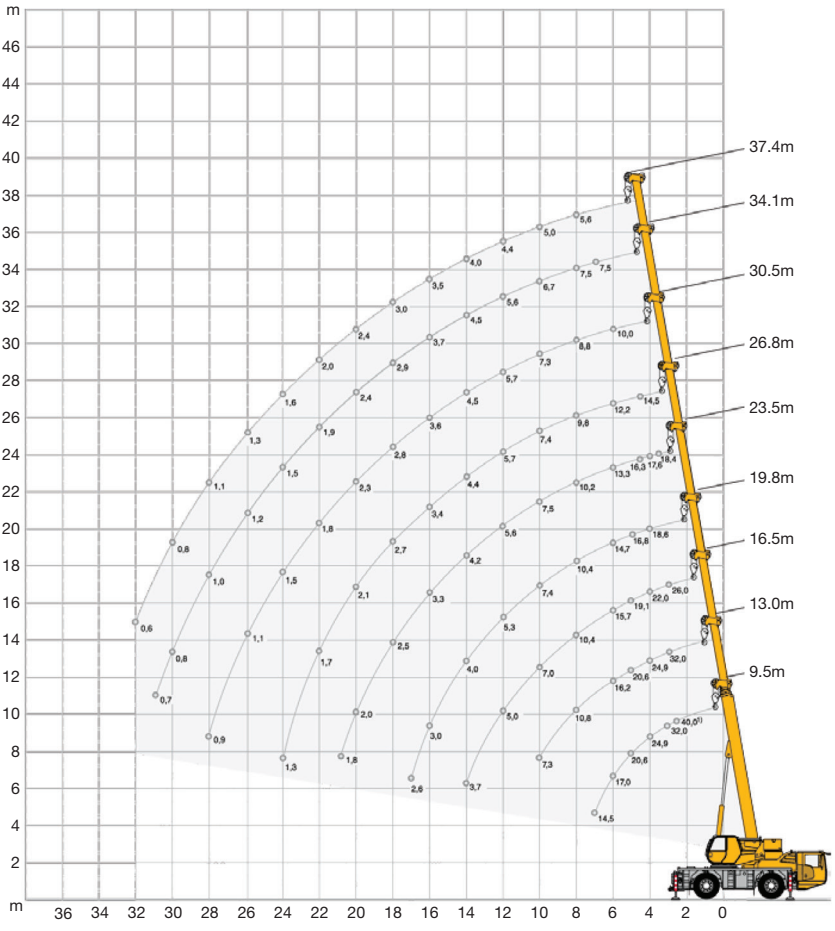
Terex AC 40/2 (L)

TONNE

40

Terex AC 40/2 (L)

Lifting heights



1) over rear

Terex AC 40/2 (L)